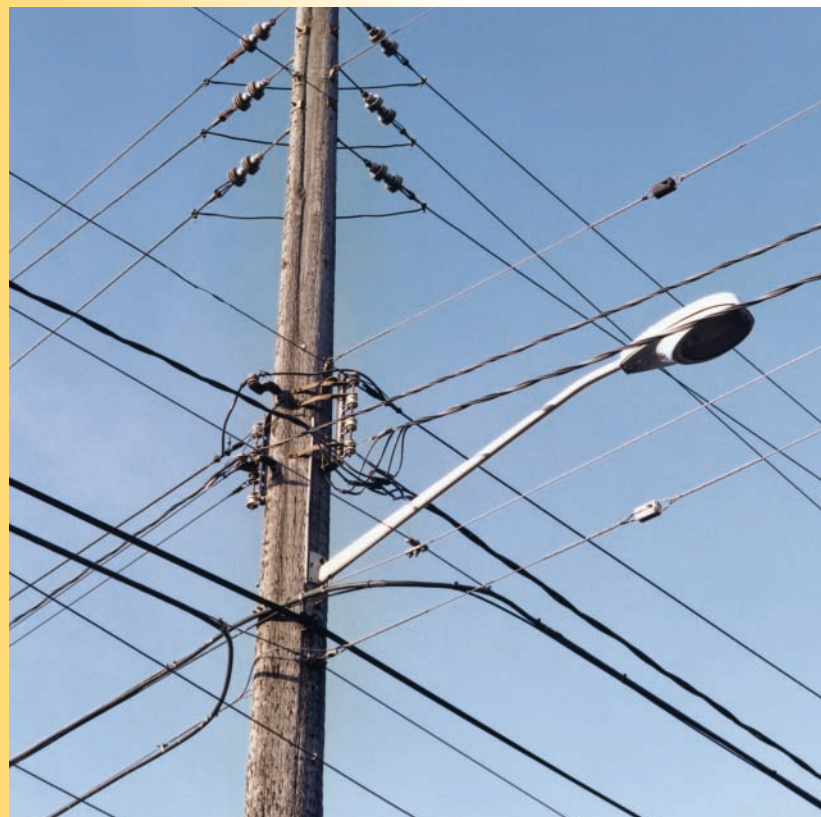


contractor beware



Work Safely Around Power Lines



Look Out for Overhead Power Lines

Point out power lines at your daily briefings.

Survey your job site to find overhead power lines, poles, and guy wires.

- **Watch for lines** hidden by trees or buildings.
- **Check daily** as conditions may change.
- **Review your emergency plan** so everyone knows what to do in case of power line contact.

Assume all overhead power lines are energized and potentially dangerous, including the service drops that run from utility poles to buildings.



Call Before You Dig

Call well in advance so you can work safely.











Call the underground utility locator service well in advance of digging, excavating, or moving earth in any way. They will arrange to mark power lines and other buried utilities so you can work safely.

Notification timeframes vary from state to state, so be sure you know how far in advance to make the call. If you don't call before digging and you hit an underground line, you or your co-workers could be injured or even killed. Plus, you could be liable for any damages.

Once you are sure underground lines have been marked, **respect the marks and dig with care.**

AMERICAN PUBLIC WORKS ASSOCIATION COLOR CODE FOR LOCATOR MARKS



-  *Electric Power Lines*
-  *Gas, Oil, or Steam*
-  *Communications Lines, Cables, or Conduit*
-  *Potable Water*
-  *Reclaimed Water, Irrigation, and Slurry Lines*
-  *Sewers and Drain Lines*
-  *Temporary Survey Markings*
-  *Proposed Excavation*

Stay at Least 10 Feet Away from Overhead Power Lines

Clearly mark boundaries to maintain a safe distance.

Keep equipment, vehicles, tools, and people **at least 10 feet away** from overhead power lines.

- **As voltage increases, clearance distances must also increase.**
Contact the local electric utility for specific safety clearances.
- **Clearly mark boundaries with tape, signs, or barricades** to keep workers and equipment a safe distance away.

If you must work closer than 10 feet, contact the local electric utility well in advance so safety arrangements can be made.



Use a Spotter When Operating Heavy Equipment

A spotter helps you stay clear of overhead lines.

No equipment operator working alone can safely judge the distance from the equipment to overhead power lines.

A spotter on the ground has a much better view.

Make sure your spotter is not doing double duty by spotting and guiding a load at the same time. Your spotter's only job should be to keep you and your equipment a safe distance from overhead power lines and other hazards.



When You Guide a Load, Be Aware

Your tag line can conduct electricity.

Workers guiding the load are most at risk of injury if equipment contacts a power line. Electricity can travel through the tag line and through you.

Don't risk injury or death by trying to guide a load and spot at the same time. **Rely on a designated spotter to help keep you clear of power lines.**



If Your Equipment Contacts a Power Line

Stay on the equipment and warn others away.



If you are operating equipment that contacts a power line, take these steps:

- If you can do so safely, **move the equipment away from the line.**
- **Stay on the equipment** until rescue workers say it is safe to get off.
- **Warn others away.** Anyone who touches the equipment or even the ground nearby may be injured or killed.
- **Have someone call 911** and the local electric utility immediately.

If fire or other danger forces you off, jump clear, keeping both feet together and without touching the ground and the equipment at the same time.

Shuffle away with small steps, keeping your feet close together and on the ground. Or, hop away on two feet, keeping both feet together.



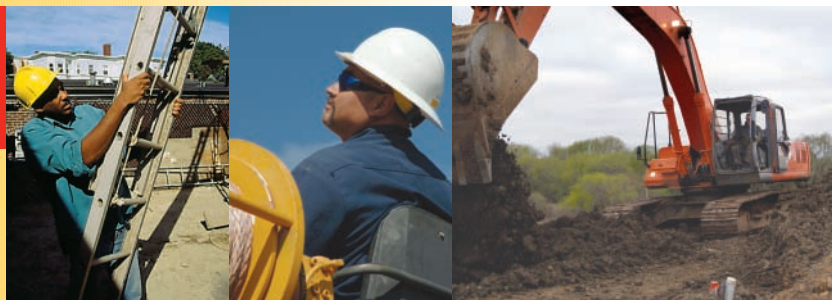
contractor beware

Whether you operate heavy equipment or use hand-held tools, when you work outdoors you work around power lines. Use these tips to stay safe:

- **Be aware of power lines** on your job site.
- **Call the underground utility locator service well in advance of digging or moving earth in any way.**
- **Stay at least 10 feet away** from overhead power lines.
- **Use a dedicated spotter when operating heavy equipment.**
- **Do not try to guide a load and be a spotter** at the same time.
- **Know what to do** if your equipment contacts a power line.



**To report emergency situations,
call 911 and the local electric utility.**



#36650 ©2006 Culver Company, LLC 1.800.428.5837